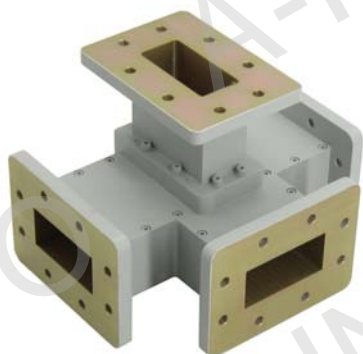
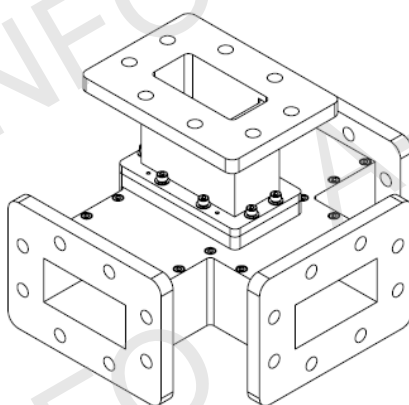
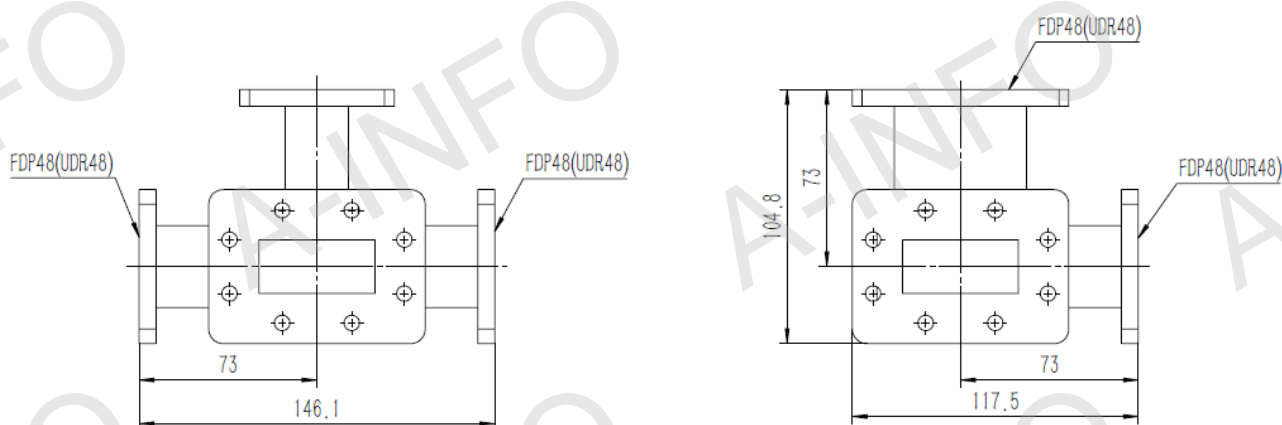


Technical Specification



EIA WR	WR187
Frequency Range(GHz)	3.95 – 5.85
Insertion Loss(dB)	0.6 Max.
VSWR H-Plane	1.30:1 Typ.
VSWR E-Plane	1.50:1 Typ.
Unbalance(dB)	±0.4
Isolation(dB)	30
Band Width	FULL
Flange Type	FDP48(UDR48)
Material	Al
Size(mm)	146.1 x 117.5 x 104.8
Net Weight(Kg)	0.88 Around

Outline Drawing (Size: mm)



AINFO Inc.

Page 1 of 5

China(Beijing):
China(Chengdu):
USA :

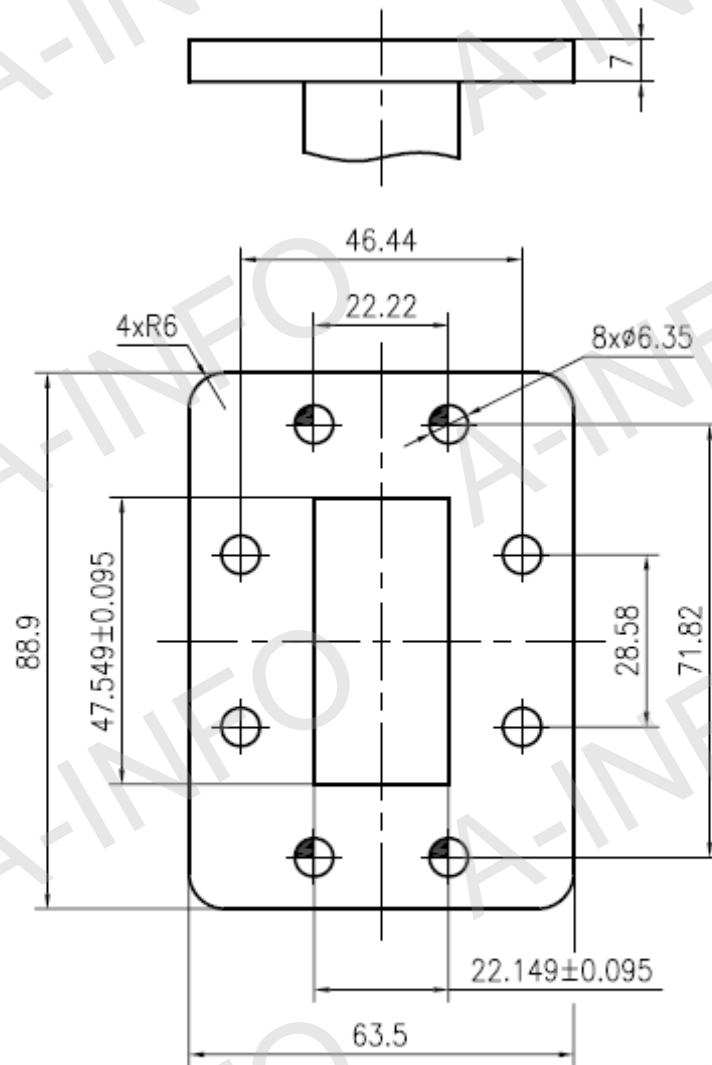
Tel: (+86) 10-6266-7326,
Tel: (+86) 28-8519-2786,
Tel: (+1) 949-639-9688,

(+86) 10-6266-7327
(+86) 28-8519-3044
(+1) 949-639-9608

Fax: (+86) 10-6266-7379
Fax: (+86) 28-8519-3068
Fax: (+1) 949-639-9670

Website: www.ainfoinc.com
Email: sales@ainfoinc.com

Flange Drawing (Size: mm)



FDP48

AINFO Inc.

Page 2 of 5

China(Beijing):
China(Chengdu):
USA :

Tel: (+86) 10-6266-7326,
Tel: (+86) 28-8519-2786,
Tel: (+1) 949-639-9688,

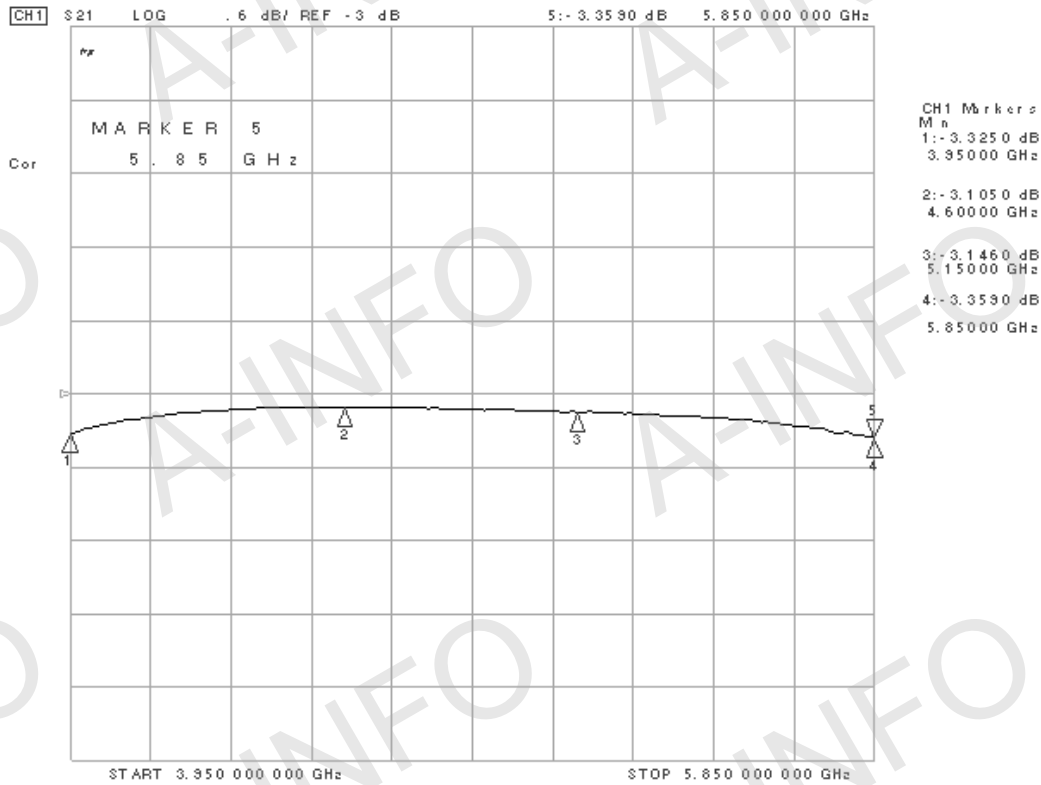
(+86) 10-6266-7327
(+86) 28-8519-3044
(+1) 949-639-9608

Fax: (+86) 10-6266-7379
Fax: (+86) 28-8519-3068
Fax: (+1) 949-639-9670

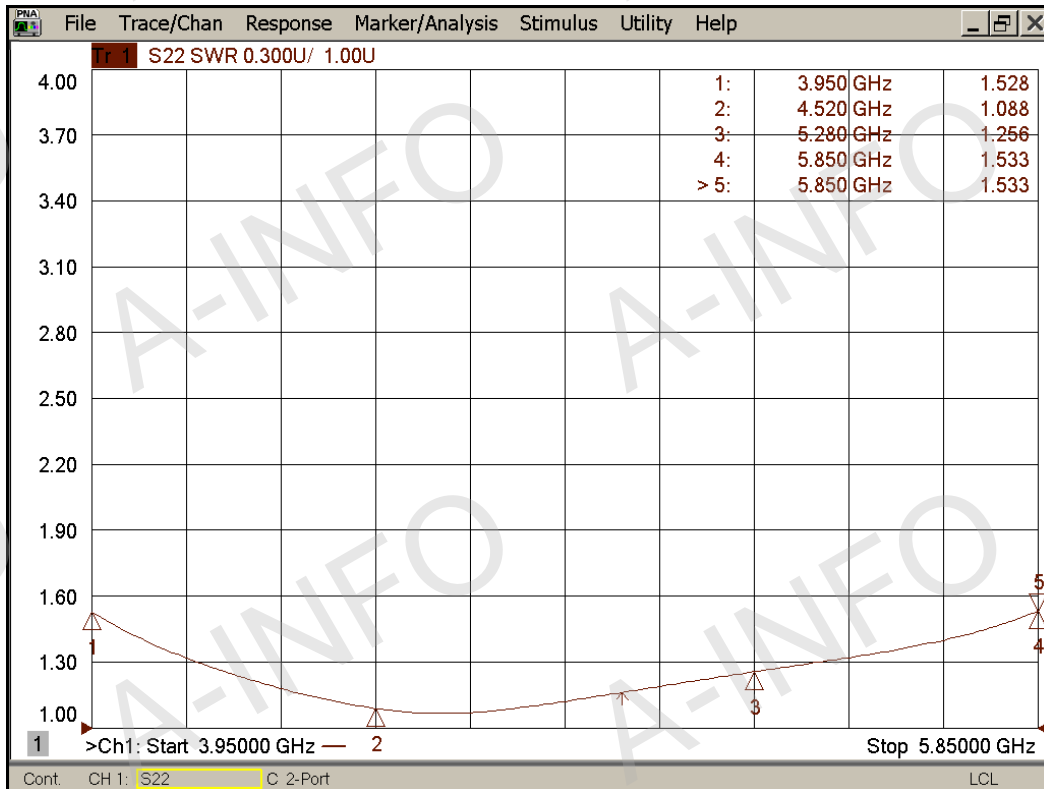
Website: www.ainfoinc.com
Email: sales@ainfoinc.com

Test Results

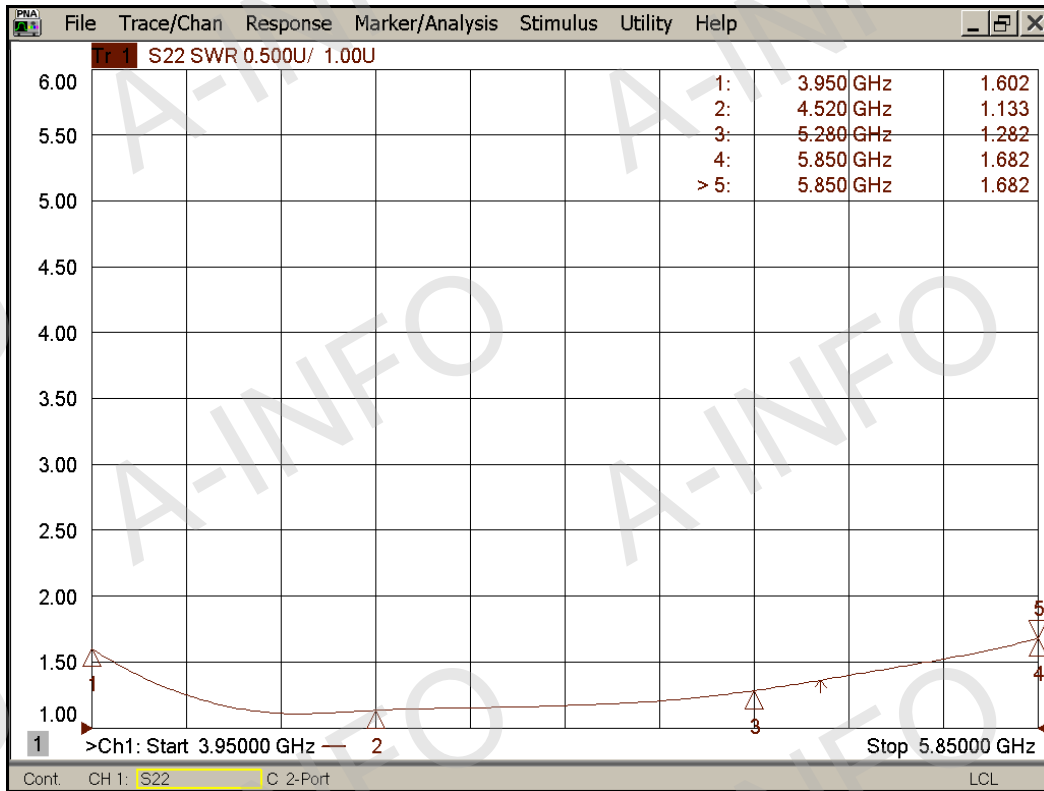
1. Insertion Loss



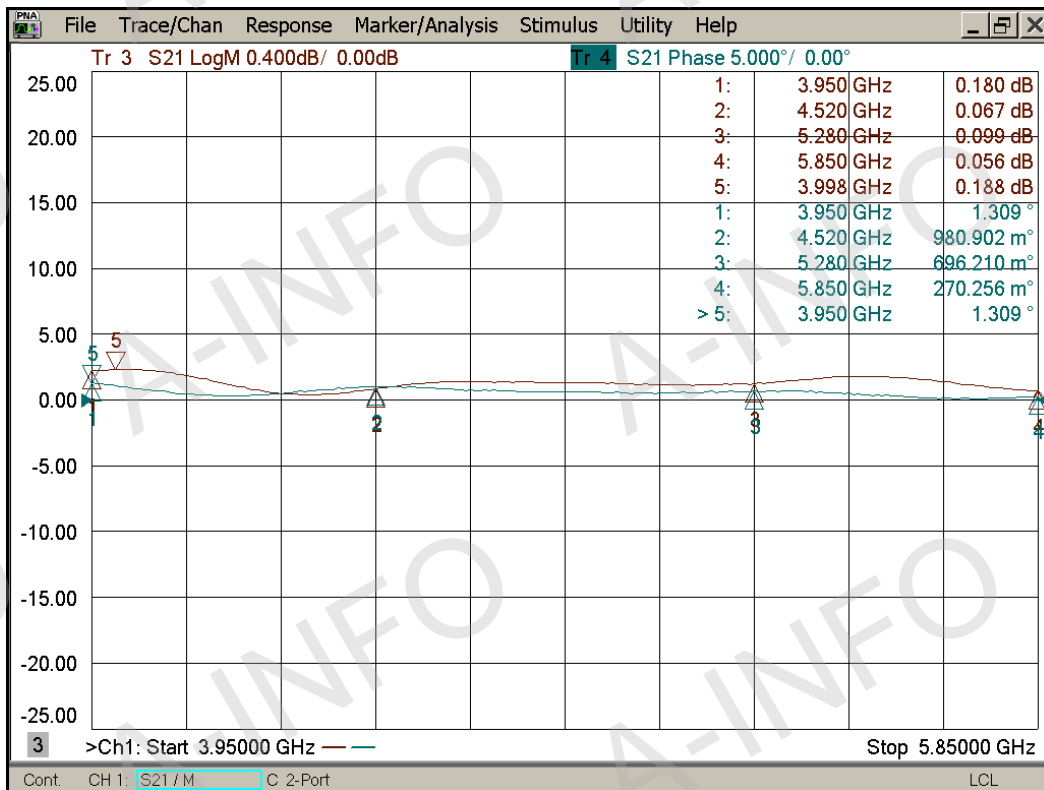
2. VSWR H-Plane



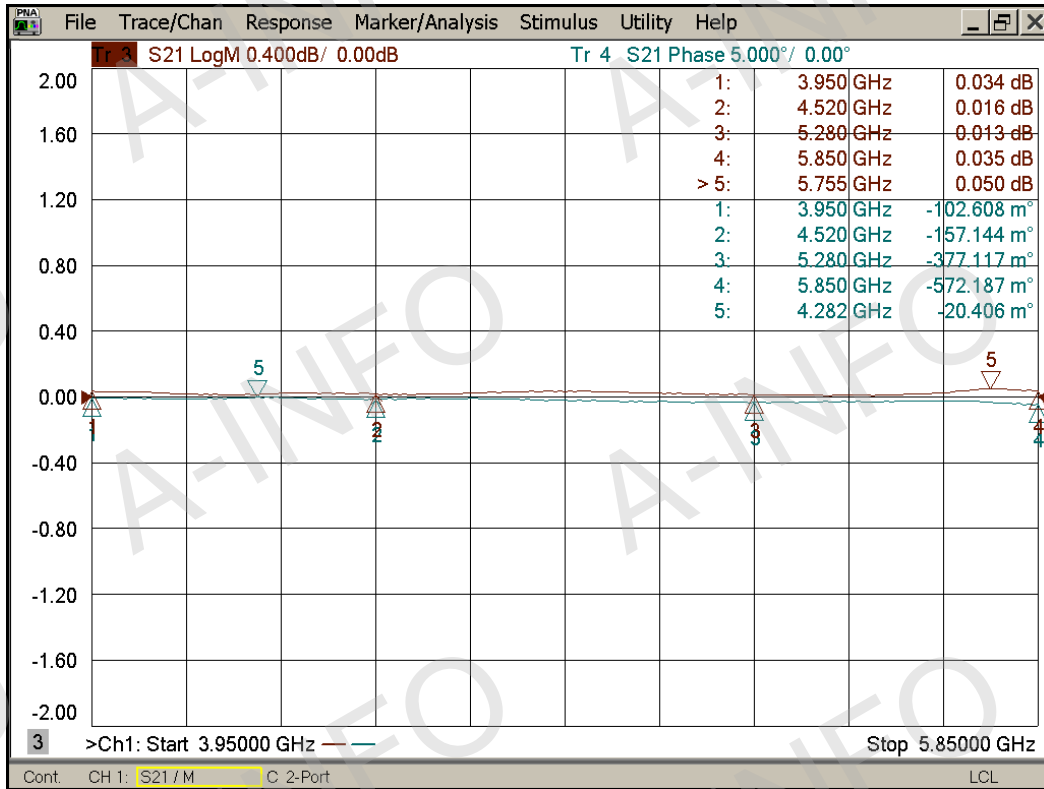
E-Plane



3. Unbalance H-Plane



E-Plane



4. Isolation

